

# MAPPING ANCESTORS

# YOUR

# MIGRATING

Tina Beard

tinab@tamarackgenealogy.com

## What types of property records exist?

- Property sales and transfers
- Wills and probate
- Chancery court/small claims
- Tax assessments
- Land surveys/subdivision plats

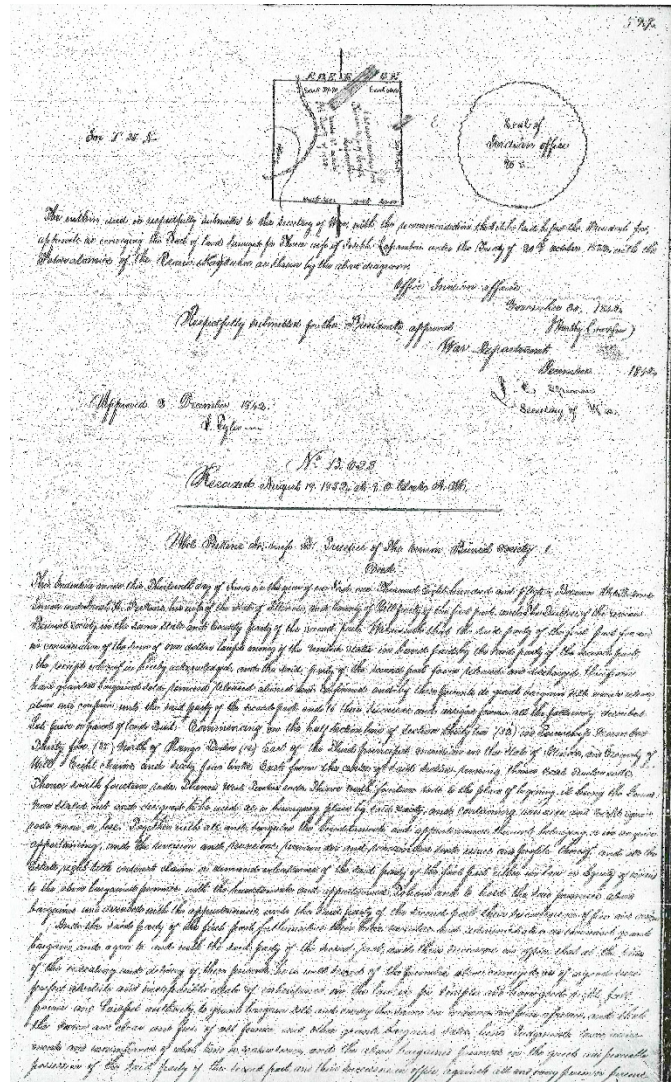
## Where can I find property records?

- County courthouse
- Local historical society or library
- University library/archives
- State archives
- National archives
- Land & Property Records

## County Records

### **Recorder of Deeds**

- |                      |           |
|----------------------|-----------|
| Deeds & Land Patents | Mortgages |
| Trusts               | Releases  |
| Incorporation        | Wills     |
| Affidavits           |           |



When an estate is settled, and property is sold or divided, a copy of the will is typically filed with the Recorder's Office as well as the Circuit Clerk's office.

If the deceased owned land in multiple counties, the will would need to be filed in each location where ownership occurred.

Property deeds will often give you an exact legal description of the property helping you to identify it on a map and assist in searching tax and assessment records.

### **Tax Collector/Treasurer**

Many collected taxes on real estate and personal property

### **Township/City Assessor**

Offers address and legal description of property; age of the structure; additions or remodels

### **Circuit Court Clerk**

Wills

Probate

Chancery lawsuits (division of property)

### **Land Use**

Building permits

Historic property landmarks

Highway Commissioner's reports and early road maps

### Local Historical Societies and Libraries

County plat and atlas books

Old city maps or directories

Indexes to property owners and tax payers

Old newspapers (tax rolls, land sales etc.)

### State Archives

Land Patents/Surveys

Taxable lands

School land sale records

Local sources for maps & property

### National Archives

Bankruptcies

Census records

## **IS MOVING DAY IN PLAINFIELD VILLAGE**

Plainfield, Ill., March 3.—Many changes are taking place in Plainfield. The following is a list of the changes: Edward LeVan is moving to the Spangler house on the Joliet road; J. Russell to the Earl Norton house in Main street; J. E. Bressler to the Olin Keene house in Fox River street; Frank Gilbert to the Herren house on Joliet road; Fred Jahnke to the John Needham house in Main street; E. R. Gaylord to the Foran house in Lockport street; Frank Eaton to his home purchased of the Evarts estate in Bartlett avenue; Mr. and Mrs. William Lockwood to the home purchased of the Barron estate in Bartlett avenue; Edward Day to the Tyler house in Main street; J. E. Andrews moves to Hammond, Ind.; J. Broderick of Wilton Center moves to the L. H. Darling house in Lockport street; John Imery is moving to the Siegel house.

Military records

Land patents

### City Directories

Directories are typically printed yearly

Address changes are often recorded side-by-side for 1 year

City Directories or "criss-cross" directories can be searched by Street address, phone number & surname

Lists those who are gainfully employed, widowed or enrolled in school

Some directories will include the non-working spouse's name in parentheses i.e. (Marie)

### Things to look for when viewing old city directories and road maps

Names of streets can change from block to block

Street name can change over time

Address changes happen frequently

<http://stevemorse.org/census/changes.html> includes a national listing of street name changes.

<b>East 94th Street</b>		2389	2393	2394	2397
1535	1266	1536	1265	2943	604
1537	1264	1538	1263	2945	602
1539	1262	1540	1261	2947	600
1543	1260	1544	1257	2949	596
1547	1254	1548	1253	3017	554
1557	1244	1550	1251	3019	552
2855	310	1554	1249	3025	546
2957	308	1556	1245	3027	544
		2658	401	3089	530
		2662	397	3043	528
		2843	n w cor	3045	526
		2864	Esomba	3047	524
				3049	520
<b>West 94th Street</b>		1043	1143	430	542
1759	1857	1956	2056	1211	1311
<b>East 95th Street</b>		1247	1397	1222	1320
929	1682	28	2249	1236	1336
1035	1512	604	1885	1246	1346
2649	730	610	1879	1652	1752
2657	720	612	1877	<b>West 97th Place</b>	
2815	634	636	1855	435	535
2819	632	638	1851	1223	1323
2821	630	642	1849	1233	1333
2823	628	658	1833		
2845	604	702	1823		
2847	602	712	1813		
2851	600	730	1795		
2853	598	734	1789		
3013	484	736	1787	3001 cHoust	2800 687
3017	482	740	1785	3027 Avenue	2862 685
3025	476	742	1783	3101	522 2944 627
3229	242	836	1727	3643	156 2946 623
3263		2816	631	3711	122 2948 621
3265	River	2818	629		
3269	River	2838	606		
3315		2854	583		
3433	200	2864	581		
3437	198	2918	591		
3439	196	2926	587		
3441	194	2938	581		
3443	190	2946	575		
3501	168	2948	573		
3507	162	3012	485		
3523	146	3024	473		
3539	130	3030	469		
3545	126	3032	441		
		3040	449		
		3050	459		
		3204	349		
		3205	847		
		3440	191		
		3450	185		
		3452	183		
		3532	133		
		3534	131		
		3536	129		
		3540	127		
		3542	125		
		<b>West 98th Street</b>		423	533
		<b>West 98th Place</b>		1236	1330
		<b>East 98th Street</b>		434	544
		3032	441		
		3040	449		
		3050	459		
		3204	349		
		3205	847		
		3440	191		
		3450	185		
		3452	183		
		3532	133		
		3534	131		
		3536	129		
		3540	127		
		3542	125		
		<b>West 99th Street</b>		25	2606
				33	2598
				37	2594
				45	2586
				51	2580
				2953	592
				3645	180
				3653	176
				3655	174

- Bush Ave., 13400 to 13800S Jeffery Ave.
- Bushnell St., 500 to 550W 23rd Pl.
- Bushnell St., 200 to 500W 23rd St.
- Busse Ave., 6750W 5000 to 5050N. Named after Mayor Fred Busse.
- Butchell Ave., 3300 to 3700W Shakespeare Ave.
- Butler Dr., 1250E 12800 to 12858S. Named after Lorin G. Butler.
- Butler St., 2200 to 3100S Keeler Ave.
- Butler St., 2350 to 12500S Normal Ave.
- Butler St., 4300 to 4400S and 8400 to 8700S Parnell Ave.
- Butterfield St., 1600 to 5500S Federal St., Armour
- Butterfield Alley, 700 to 800W Schiller St.
- Butterfield St., 5500 to 7900S 11100 to 11500S Perry Ave. Named aft
- Byer Ave., 8700 to 9400S Aberdeen St.
- Byer St., 8700 to 9400S Aberdeen St.
- Byford Ave., 1400 to 1600S Drake Ave.
- Byrne Ave., 2800 to 3200N Spaulding Ave.
- Byron Ave., 2800 to 3000N McLean Ave.
- Byron St., 800 to 1000W Sheridan Rd.

Left: 1909 Chicago Street Numbering Guide  
 Right: Chicago Street Name Changes  
 Newberry Library 1948

<http://neworleanspubliclibrary.org/~nopl/info/louinfo/numberchanges/numberchanges.htm>

[www.chsmedia.org/househistory/namechanges/start.pdf](http://www.chsmedia.org/househistory/namechanges/start.pdf)

[www.chicagohistory.org/documents/research/resources/1909NumberChanges.pdf](http://www.chicagohistory.org/documents/research/resources/1909NumberChanges.pdf)

## Homestead & Other Land Grants

National Archives: [www.archives.gov/research/land](http://www.archives.gov/research/land)

Bureau of Land Management: [www.glorerecords.blm.gov](http://www.glorerecords.blm.gov)

### **Homestead Records**

Tract books for all patents except Alaska are housed at the National Archives in Washington, D.C. They are organized by state, land office and legal land description.

Patents filed after 1908 (called serial patents) are filed numerically by the order in which the patent was received.

60% of homesteads failed before completion. Failed applications are held in the Application Papers at the National Archives.

The 40% who received Homestead Certificates can be found in the tract books and in the BLM Land patent search.

### **Locating Homestead Records**

A few indexes exist online for Homestead applications:

Homestead National Monument [www.nps.gov/home/index.htm](http://www.nps.gov/home/index.htm)

[www.fold3.com](http://www.fold3.com) has the Nebraska Homestead Application Files

[www.familysearch.org](http://www.familysearch.org) has the Bureau of Land management tract books for 27 states. These are browsable only, no name index

The Bureau of Land Management has records for Nebraska, Kansas and Oklahoma only

[www.glorerecords.blm.gov](http://www.glorerecords.blm.gov)

Broken Bow Nebraska Homestead Records Index <http://cdrh.unl.edu/homestead>

## MAPS



Aerial & Birdseye Maps

Cadastral Maps

County and State Maps

Enumeration Maps

Fire Insurance Maps

Road Maps

Rail Road Maps

Modern Day Mapping

### **Aerial Maps**

These maps are a great source for visual geographic data such as mountains, rivers, lakes and valleys

Useful for seeing property in relation to its surroundings like other homes, businesses, and roadways

Identifying changes in development and land usage patterns for an area over a period of time

Wisconsin Historical Society Map Collections on Flickr:

[www.flickr.com/photos/whsimages/sets/72157601590007015](http://www.flickr.com/photos/whsimages/sets/72157601590007015)

### **Birdseye Maps**

Birdseye maps are hand-drawn and colored maps typically done in the 19th century.

An artistic rendition of what a particular town or region look like from above.

These perspective maps are not done to scale, but they are highly detailed and often frameable.



Modern Birdseye Maps [www.virtualbirdseye.com](http://www.virtualbirdseye.com)

Library of Congress Panoramic Map Collection: [www.loc.gov/collections/panoramic-maps](http://www.loc.gov/collections/panoramic-maps)

[www.bigmapblog.com/tag/birdseye](http://www.bigmapblog.com/tag/birdseye)

### **Cadastral Maps**

Cadastral maps originally recorded metes and bounds. Its purpose is to record ownership and tenure of the land.

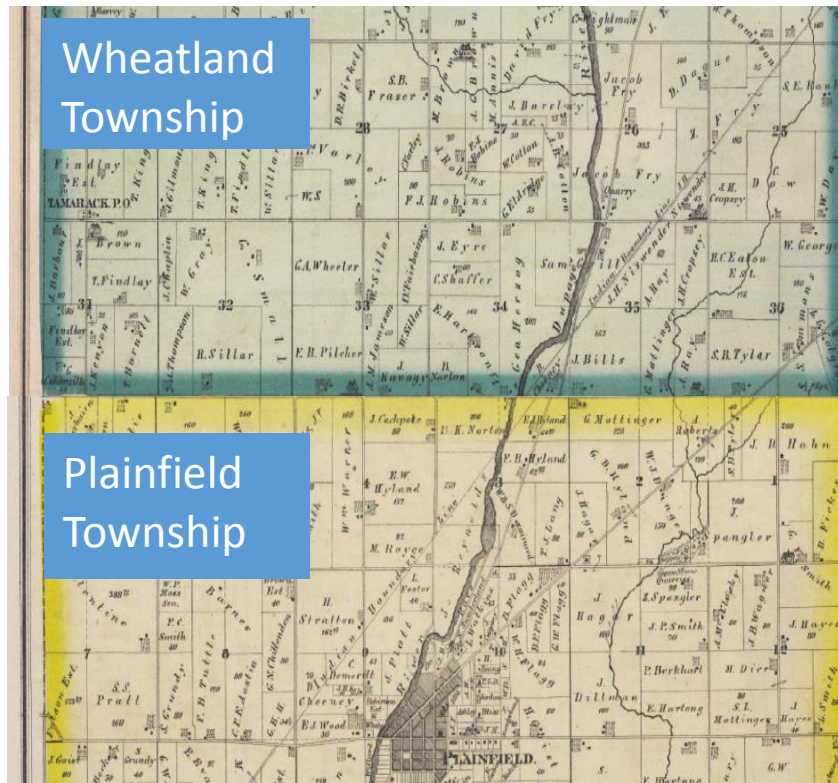
The term cadastral map has since come to include any map that includes property boundaries. Examples of cadastral maps are plat maps, city/town/ village maps, and subdivision plats.

These maps also often include landmarks like rivers, lakes, churches, cemeteries and other points of reference.

Cemetery maps are considered cadastral because they show owner and boundaries of grave lots.

Most municipalities use cadastral maps in their GIS planning departments. This computerized mapping system creates layers of maps for different topics like homes, roads, utilities, sewer systems etc.

When reading cadastral maps be sure to look across township, county, and state boundaries for names and familial connections



Be sure to align township or other maps to see any properties that carry across township, county or state boundaries.

### Census Enumeration Maps

Census Enumeration maps are helpful in locating family through the U.S. Federal Census

Boundary lines change over time. Census maps help you pinpoint the exact district of your ancestors at a specific time and place

Ancestors that lived on or near the county or state line may have been counted under these nearby locations due to line changes

HeritageQuest has state census maps for years 1790-1920

Modern census maps are also available to download from the U.S. Census Bureau:

[www.census.gov/geo/maps-data/maps/reference.html](http://www.census.gov/geo/maps-data/maps/reference.html)

## Sanborn Fire Insurance Maps

Sanborn Fire Insurance Maps cover misc. years from 1867-1970

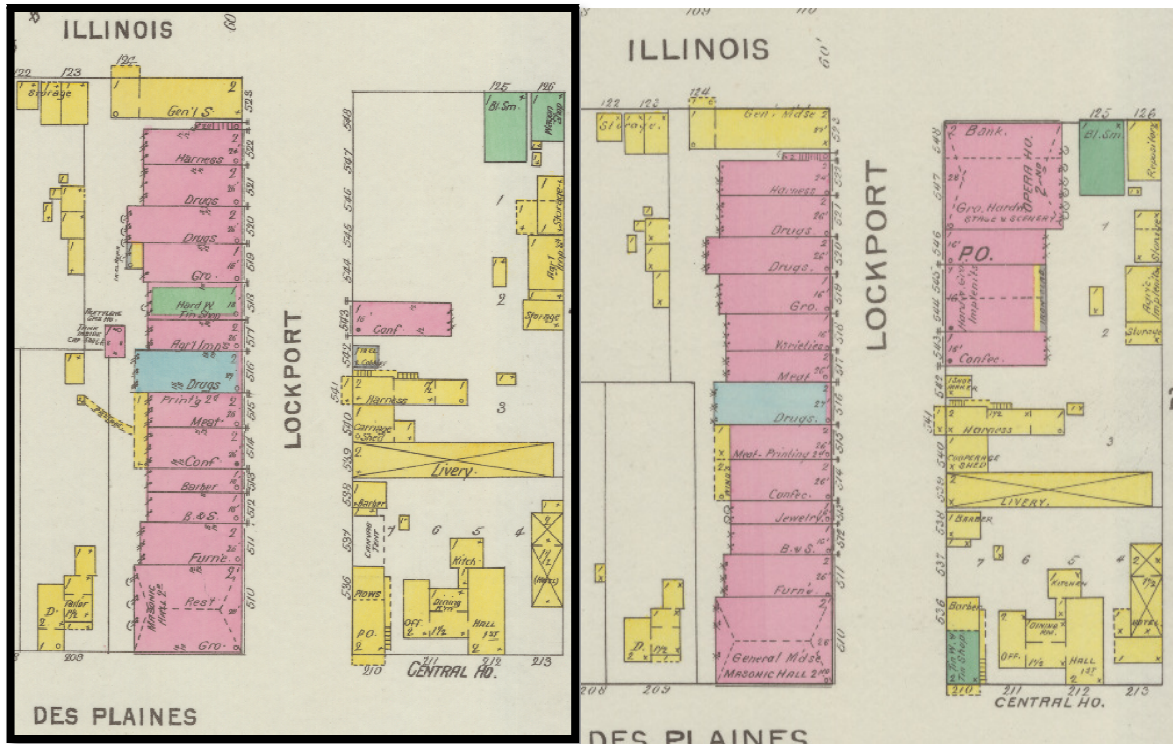
Detailed descriptions of individual properties including size, shape, location of windows & doors, construction materials etc.

Street level descriptions of towns and cities including location of streets, sidewalks, trolley lines, railroad tracks, wells and more

Locations and descriptions of businesses & industry

Documents changes to an area over the years

Maps can be saved and printed



University of Pennsylvania has Philadelphia Sanborn fire insurance maps online

<http://guides.library.upenn.edu/content.php?pid=387313&sid=3190707>

## Historic Road Maps and Guides

[www.us-highways.com](http://www.us-highways.com)

[www.dot.il.gov/maps/travelmaps.htm](http://www.dot.il.gov/maps/travelmaps.htm)

[https://en.wikipedia.org/wiki/County\\_highway](https://en.wikipedia.org/wiki/County_highway)

[http://en.wikipedia.org/wiki/Numbered\\_highways\\_in\\_the\\_United\\_States#State\\_highways\\_and\\_other\\_similar\\_systems](http://en.wikipedia.org/wiki/Numbered_highways_in_the_United_States#State_highways_and_other_similar_systems)

Old Maps Online [www.oldmapsonline.org](http://www.oldmapsonline.org)

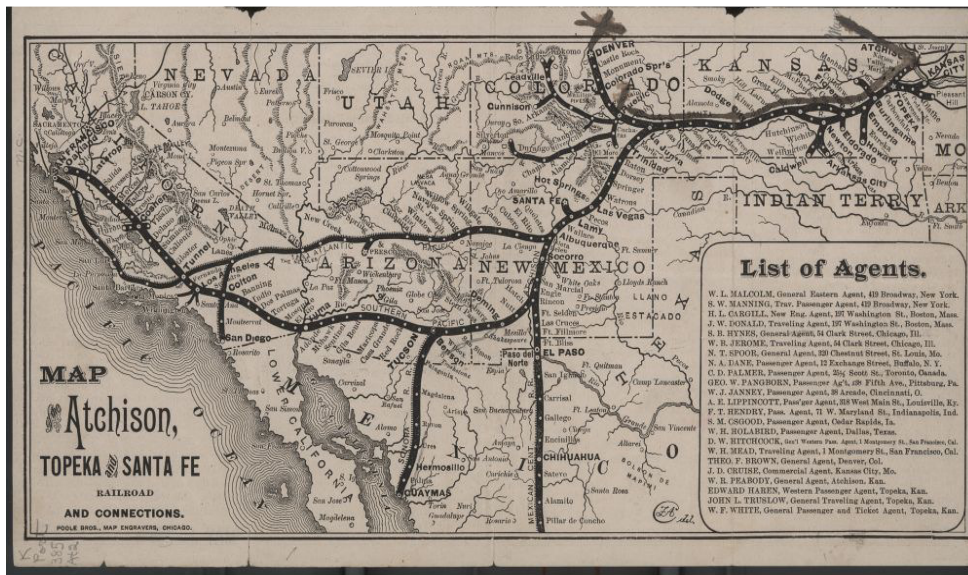
## Railroad Maps and Records

Railroad maps are extremely useful for plotting your migrating ancestors. Schedules, maps, and ticket fares help tell the story of your ancestral past

Dozens of railroad companies operated over 200,000 miles of track by the start of the 20th Century. These companies employed thousands of employees nationwide.

Hundreds of towns sprang up as railroad stops and some disappeared just as quickly. Old railroad maps are important to locating these abandoned towns

Railroad maps can also be used to find right-of-way land sales



## Railroad Websites

Collection of Railroad Gazetteers online from Internet Archives:

[https://archive.org/details/smithsonian?and\[\]=subject%3A%22Railroads%22](https://archive.org/details/smithsonian?and[]=subject%3A%22Railroads%22)

Newberry Library: [www.newberry.org/railroad-archives](http://www.newberry.org/railroad-archives)

Chicago & Northwestern Historical Society: [www.cnwhs.org](http://www.cnwhs.org)

Atchison, Topeka, Santa Fe: [www.kshs.org/p/railroad-research/15983](http://www.kshs.org/p/railroad-research/15983)

Union Pacific Railroad Historical Society: <http://uphs.org>

[www.historicmapsrestored.com/old-railroad-maps.html](http://www.historicmapsrestored.com/old-railroad-maps.html)

<http://memory.loc.gov/ammem/gmdhtml/rrhtml>

Central Pacific Railroad Maps [www.cpr.org/Museum/Maps](http://www.cpr.org/Museum/Maps)



## Modern Day Mapping

GIS: Graphic Information Services

Mapping system that allows a governmental body to create an “overlay” over an existing map to highlight a specific service

<http://lib.guides.umd.edu/c.php?g=326454&p=2192920>

## **Google Maps**

You can build your own interactive maps, plot your family history, and share it with others

<http://maps.google.com/maps?hl=en&tab=w>

MapsGL interactive 3D imagery for buildings and landmarks

GPS: Global Positioning Systems

A space-based satellite navigation system that provides location and time information. Those coordinates can be plotted on a map to identify your position anywhere in the world

## **Interactive Mapping**

Many museums and archives are creating interactive google maps, overlaying historic maps with modern images and vice-versa. Here are a few really cool examples:

<http://maps.nls.uk/os/6inch/index.html>

<http://rumsey.geogarage.com/maps/g0140000.html>

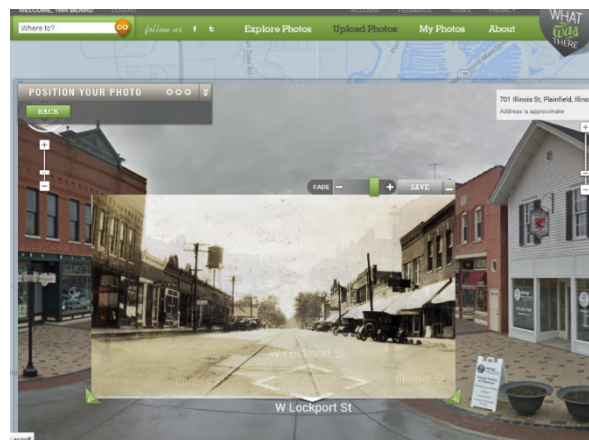
[www.smithsonianmag.com/history/what-did-chicago-look-great-fire-180947929/](http://www.smithsonianmag.com/history/what-did-chicago-look-great-fire-180947929/)

Newberry Library Chicago <http://www.chicagoancestors.org/>

<http://historypin.com>

[www.whatwasthere.com](http://www.whatwasthere.com)

*What Was There* allows users to take historic images and line them up on modern street-view Google maps. You can fade between the modern view and historic images.



## **National Map Websites**

Atlas of the Historical Geography of the U.S.: <http://dsl.richmond.edu/historicalatlas>

Bureau of Land management modern land survey maps  
[www.geocommunicator.gov/blmMap/MapLSIS.jsp](http://www.geocommunicator.gov/blmMap/MapLSIS.jsp)

Google Maps World Gazateer [www.maplandia.com](http://www.maplandia.com)

David Rumsey Map Collection [www.davidrumsey.com](http://www.davidrumsey.com)

Library of Congress Map Collection <http://memory.loc.gov/ammem/gmdhtml/gmdhome.html>

New York Public Library Map Collection <http://maps.nypl.org/warper>

U.S. Geological Survey [http://geonames.usgs.gov/pls/gnispublic/wwv\\_flow.accept](http://geonames.usgs.gov/pls/gnispublic/wwv_flow.accept)

North Carolina State Library Map Collection [www.lib.ncsu.edu/maps/citingmaps.html](http://www.lib.ncsu.edu/maps/citingmaps.html)  
[www.geocaching.com](http://www.geocaching.com)

[www.gps.gov](http://www.gps.gov)

## **Helpful Books**

Dollarhide, William and William Thorndale. Map Guide to the U.S. Federal Censuses, 1790-1920. Genealogical Publishing Co. Baltimore, MD. 1987.

Hatcher, Patricia Law. Locating Your Roots: Discover Your Ancestors Using Land Records. Better Way Books, Cincinnati, OH. 2003.

Kashuba, Melinda. Walking With Your Ancestors: A Genealogist's Guide to Using Maps and Geography. Family Tree Books. Cincinnati, OH. 2005.

Light, Sally, House Histories. Goldenhill Press. Spencer Hill, N.Y. 1989.